

Architectural Manual Dimming Control **AMD FADER PANELS**

NEW



AMD 1



AMD 2



AMD 3



AMD 4

Comprehensive range of control options:

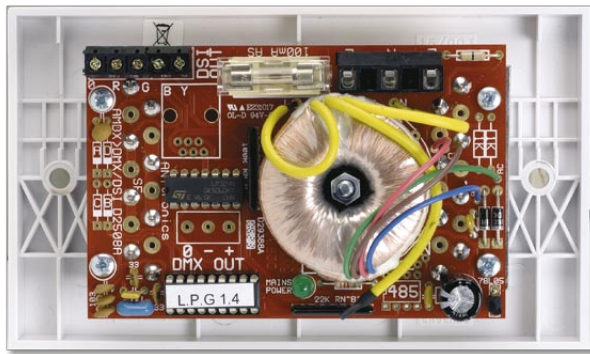
- 0 – 10 V analogue control.
- DMX digital control.
- DSI digital control.
- Simple direct control of DALI fluorescent ballasts.

- Stylish and easy to use 1, 2, 3 and 4 way manual fader panels.
- Low voltage and mains powered versions available.
- Standard UK double pattress fitting:
Use 32 mm deep back box for low voltage versions.
Use 45 mm deep back box for mains versions.
(back box not normally supplied).
- Standard version supplied in white plastic panel, a wide variety of architectural finishes are available (some examples shown opposite).
- Robust 60 mm metal construction sliders with integral dust covers.
- Symbols indicate minimum and maximum levels which allows vertical or horizontal mounting.
- DMX, DSI and DALI 4 way versions available as 3 channels with Master (e.g. for RGB LED control).



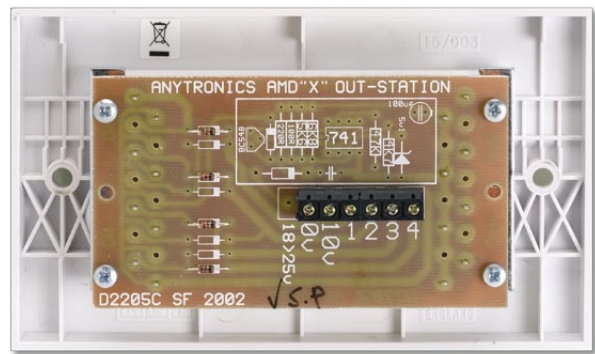
< Standard architectural surrounds.

Finishes shown: White, Antique Brass, Chrome, Brushed Aluminium, & Brass.



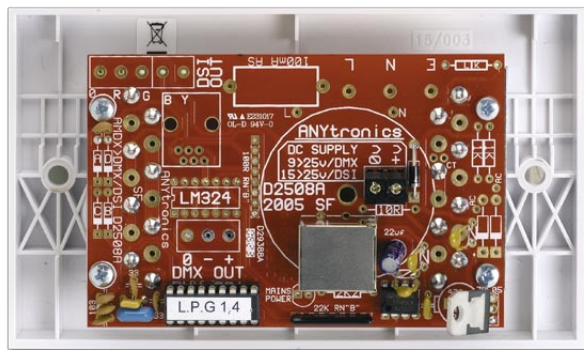
Mains Powered

The AMD panels offer simple to use and competitively priced dimming controls with an attractive finish that can be matched to a wide variety of architectural finishes.



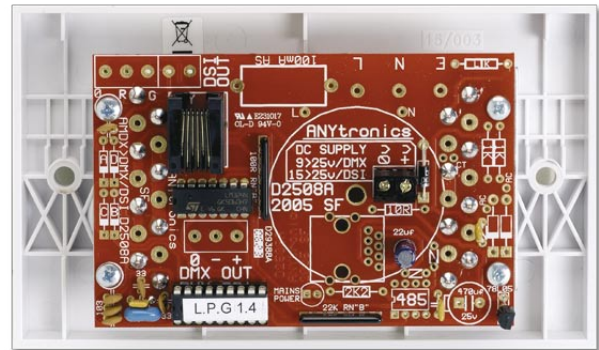
Analogue

The analogue version uses the +10 V reference supply available from most of the Anytronics range of dimming packs to control between 1 and 4 channels of dimming.



DMX

The DMX version can be used to control dimming packs, Anycolour systems, and many LED and intelligent lighting systems. The standard start address is 1. External connections are made via an RJ45 connector or screw terminals.



DSI / DALI

The DSI and DALI versions provide from 1 to 4 channels of control for dimming fluorescent ballasts such as those used in our Anycolour system and Anycove overlapping cove lighting system. These systems provide colour controlled lighting and with appropriate choice of lamps can be used for office/retail and commercial lighting projects. In all these situations the AMD panel can be used to provide a local control facility in an architectural finish of your choice.

See our CB and F Pack leaflets for details of our extensive range of wall mounting dimming and switching power packs suitable for use with the DMX and analogue AMD panels.

Specifications and designs are subject to change without any notice or obligation on the part of the manufacturer. © 2006 Anytronics Ltd.



Anytronics Limited

Units 5 & 6, Hillside Industrial Estate, London Road, Horndean, Hampshire, PO8 0BL

Tel: +44 (0)23 9259 9410 Fax: +44 (0)23 9259 8723 sales@anytronics.com www.anytronics.com